

Hephzibah Elementary School



Ms. Jennifer Williams, PYP Coordinator

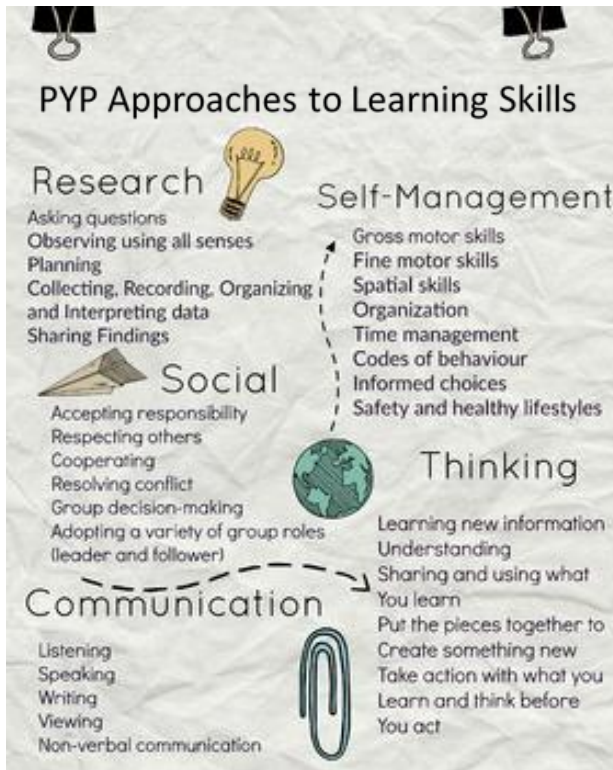
2542 Hwy 88, Hephzibah, GA

<https://www.rcboe.org/hes>

706-592-4561

How can parents support the PYP?

- Make the learner profile part of your life.
- Model the appropriate behaviors.
- Maintain regular contact with HES and your child's teacher.
- Encourage your child to take ACTION.
- Encourage your child to ask questions and help to find the answers.
- Volunteer!
- Encourage internationalism.
- Read with your child.



Inquirer I ask questions. I want to learn more.	Caring I care about others. I am kind.	Balanced I am fair. I look after myself.	Thinker I use my brain. I think of solutions.
Open-minded I am respectful of things that are different.	Learner Profile		Knowledgeable I know things. I share what I know.
Principled I do the right thing. I am honest.	Risk-taker I challenge myself. I try new things.	Reflective I think back about my actions and my learning.	Communicator I share my ideas. I listen to others.

What is International Baccalaureate (IB)?



The IB philosophy focuses on development of the whole child: academic, social, physical, and emotional. It focuses on the learner profile, which describes a broad range of human capacities and responsibilities that go beyond academic success. They imply a commitment to help all members of the school community learn to respect themselves, others and the world around them. Through the inquiry based approach to teaching and learning, the curriculum addresses three inter-related questions:

- What do we want to learn?
- How best will we learn?
- How will we know what we have learned?

What is the Primary Years Programme (PYP)?

- The IB Primary Years Program (PYP) nurtures and develops young students as caring, active participants in a lifelong journey of learning.
- The PYP offers an inquiry-based, transdisciplinary curriculum framework that builds conceptual understanding. It is a student-centered approach to education for children aged 3-12. It reflects the best of educational research, thought leadership, and experience derived from IB World Schools.
- The PYP curriculum framework begins with the premise that students are agents of their own learning and partners in the learning process. It prioritizes people and their relationships to build a strong learning community.



What is our purpose?

IB Mission Statement

The International Baccalaureate aims to develop inquiring, knowledgeable, and caring young people who help to create a better and more peaceful world through intercultural understanding and respect . . .

- To this end the organization works with schools, governments and international organizations to develop challenging

programs of international education and rigorous assessment.

- These programs encourage students across the world to become active, compassionate, and lifelong learners who understand that other people, with their differences, can also be right.

HES Mission Statement

The mission of Hephzibah Elementary School is to develop life-long learners who are caring, compassionate, responsible, and committed to seeking knowledge and understanding of the world around them.